

## DATA SHEET



### COMPRISED OF:

- An all-inclusive subscription package
- A large selection of compatible access points (APs)

### SUBSCRIPTION OPTIONS:

- 1-year
- 3-year
- 5-year

### THE SUBSCRIPTION INCLUDES:

- AP management
- Reporting and analytics
- 24x7 phone / chat / web support

## SIMPLIFIED MANAGEMENT OF MULTI-SITE WI-FI NETWORKS

Ruckus Cloud Wi-Fi simplifies deployment, monitoring and management of your distributed wireless network. Manage all of your WLANs from anywhere using the intuitive web interface or our full-featured mobile app. Administrators get a unified (“single pane of glass”) view of all locations, as well as connected APs and clients.

Everyday operational tasks—from troubleshooting to adding new APs and creating guest networks—are streamlined. Reduce time spent on WLAN management, while staying on top of your organization’s Wi-Fi needs.

## TOP PERFORMANCE WITH LOW COST OF OWNERSHIP

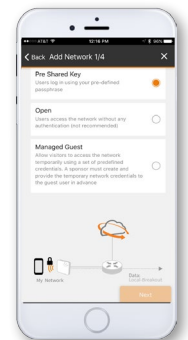
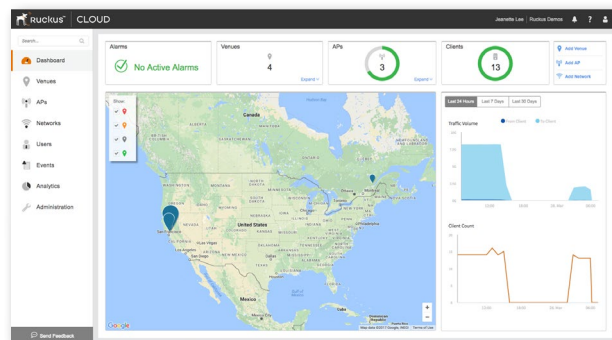
Demand for Wi-Fi continues to grow. And grow quickly. That’s why we’ve designed our APs to deliver an unmatched combination of performance and low cost of ownership.

*Performance:* Even our entry-level APs incorporate Ruckus patented innovations like BeamFlex™ and ChannelFly™ to reduce radio interference, noise and network performance issues. As a result, your WLAN users get reliable, fast access even under the most challenging RF conditions.

*Low cost of ownership:* The same technologies contribute to higher capacity and greater coverage (range) per AP. This means you can support more users per AP with better performance than competitive offerings. You save on Wi-Fi infrastructure costs as you grow, including APs, subscription fees and installation.

## PROTECT YOUR AP INVESTMENT

Ruckus Cloud Wi-Fi supports an ever-expanding list of the latest Ruckus 802.11ac indoor and outdoor APs. With Ruckus, you have the flexibility of migrating from one management architecture – virtual controller, appliance-based controller, controller-less, or cloud – to another (or a hybrid deployment) without losing the use of your APs.



## KEY FEATURES AND BENEFITS

### BEST-IN-CLASS APs

- The latest Ruckus 802.11ac Wave 1 and Wave 2 APs
- Indoor and outdoor options
- Mesh and fast roaming
- Automatic RF optimization
- Automatic interference mitigation
- Automatic client load balancing and band balancing

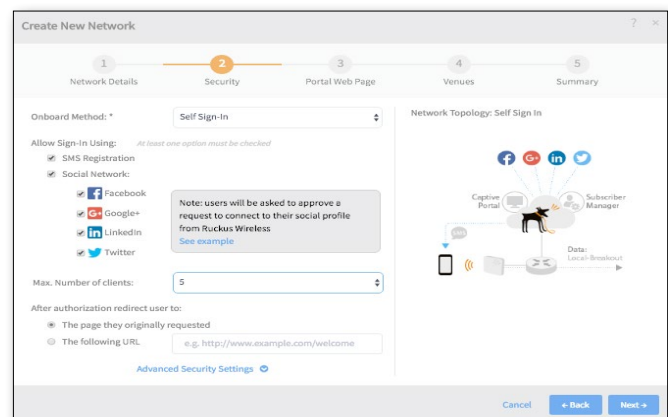
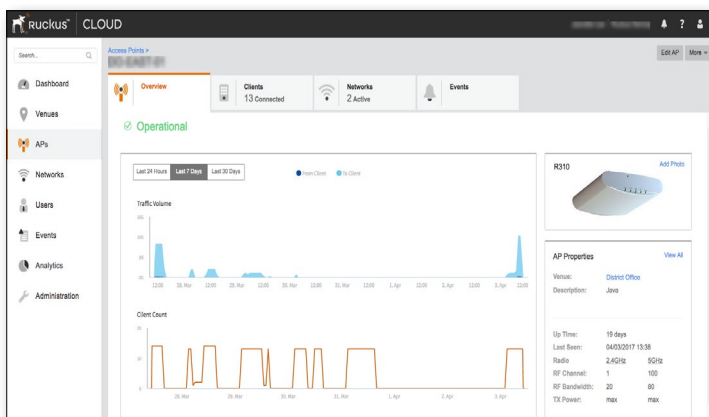
- ✓ High-density deployments
- ✓ High-scale deployments: hundreds of sites, thousands of APs, tens of thousands of clients
- ✓ Deployment: auto-connect to cloud and serial number scanning via the mobile app



### INTENT-DRIVEN UI

- Simple, intuitive UI speeds management
- Venue concept supports WLAN deployment, management and troubleshooting easy across multiple sites
- Simplified workflows
  - RF policies, WLAN types (private, public, sponsored guest), rich guest access options, QoS, VLANs
- Logs pre-filtered by venue, WLAN, APs, clients
- Dedicated section for big data analytics

- ✓ Setup wizard to help quickly set up an initial set of venues, APs, and wireless networks
- ✓ Admin, guest manager and read-only role-based administration
- ✓ Allow partners to manage network
- ✓ "Easy button" access to Ruckus Support on a 24x7 basis



## COMPREHENSIVE GUEST ACCESS AND WLAN SUPPORT

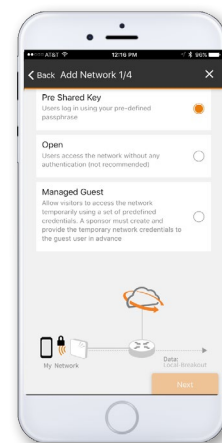
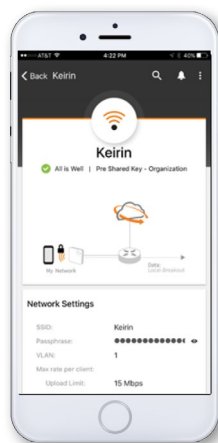
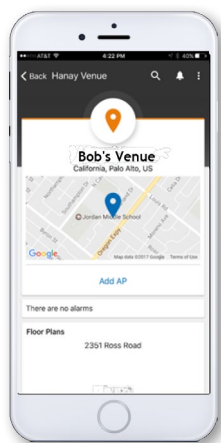
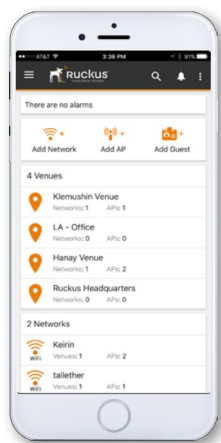
- Self-help or sponsored guest WLANs
- Social login, SMS and other captive portal options
- Bulk creation of guest credentials
- Mobile app for dynamic captive portal ad insertion and monetization
- Time-based scheduling of SSIDs
- Free Wi-Fi with lock-out period and simple unblock options
- MAC caching to allow repeat customers quick access to guest Wi-Fi

- ✓ Subscriber unique captive portals
- ✓ Mobile, SMS, email notification integration
- ✓ Secure personal access using PSK, Cloudpath or 802.1x with AAA
- ✓ Public access using social, SMS, email, click-through, passcode

## POWERFUL MOBILE APP

- SMS, email and push notifications
- Get notified of AP status
- Scan serial# of AP to add to venue
- Customize captive portal splash content and logo
- Extend free Wi-Fi access for guests
- Scan business card to generate guest pass

- ✓ Modern cloud-based application with push notifications
- ✓ Native iOS and Android versions



## ZERO-TOUCH PROVISIONING

- Scan AP serial number with mobile app—no data entry required
- Global cloud discovery automatically registers APs
- Cloud auto-updates firmware upon registration

- ✓ LED indicators report cloud discovery status
- ✓ Latest firmware maintained by the cloud

### Scan serial# using mobile app



### Or, add AP serial number in the web interface

### Plug-in AP to connect to the cloud

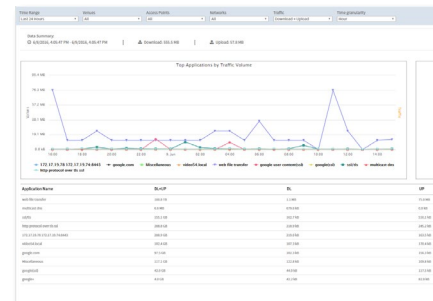
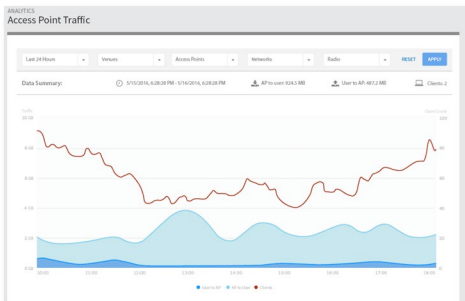


ALL GOOD!

## ADVANCED REPORTING AND ANALYTICS

- 11 different report options
- Long-term reporting for up to 6 months
- 15-minute data intervals
- By venue, by AP, by WLAN, by radio
- Client and AP traffic trending
- Application visibility

- ✓ Big data architecture using Hadoop multi-node clusters
- ✓ Extract, transform load processing
- ✓ Indexed structured reporting for fast access



## INVESTMENT PROTECTION

- Ruckus Cloud Wi-Fi managed APs can be migrated from or to Ruckus controller-based or controller-less architectures

- ✓ Cloud Wi-Fi runs the same virtual SmartZone controllers that customers can run in their data center
- ✓ Protect all your AP, installation and planning investment



### FEATURE SUMMARY

<b>Scale</b>	<ul style="list-style-type: none"> <li>• Virtually unlimited number of APs can be supported</li> <li>• Clients per AP: defined by AP model</li> </ul>
<b>Employee Wi-Fi</b>	<ul style="list-style-type: none"> <li>• PSK (WPA/WPA2), 802.1x/RADIUS authentication</li> <li>• SSID scheduling</li> <li>• Per client and per SSID bandwidth rate limit</li> </ul>
<b>Guest Wi-Fi</b>	<ul style="list-style-type: none"> <li>• Open, PSK, captive portal, sponsored guest</li> <li>• Guest manager (front desk) admin portal</li> <li>• Bulk creation of guest credentials</li> <li>• SMS authentication, email and print guest pass</li> <li>• Social networking login</li> <li>• SSID scheduling</li> <li>• Per WLAN aggregate bandwidth limit</li> <li>• Per WLAN and per client bandwidth limit</li> <li>• MAC caching support</li> </ul>
<b>RF Features</b>	<ul style="list-style-type: none"> <li>• Channel and power control per venue and per AP</li> <li>• BeamFlex+, band balancing (between 2.4 and 5GHz radios on the same AP), load balancing (between APs)</li> <li>• ChannelFly and background scan</li> <li>• Airtime fairness</li> <li>• Client isolation</li> <li>• Mesh (AP model R310 does not support mesh)</li> </ul>
<b>Traffic Types</b>	<ul style="list-style-type: none"> <li>• Only AP and client management traffic is sent to cloud</li> <li>• Client data traffic is broken out to local LAN</li> </ul>
<b>Security</b>	<ul style="list-style-type: none"> <li>• All traffic from AP to cloud is encrypted</li> <li>• Client data traffic is locally terminated (not sent to cloud)</li> <li>• Management data in the cloud is fully encrypted</li> </ul>
<b>Secure Device Onboarding and Device-based Policy</b>	<ul style="list-style-type: none"> <li>• Via Cloudpath subscription service (sold separately)</li> </ul>
<b>Detailed Reporting</b>	<ul style="list-style-type: none"> <li>• Application visibility</li> <li>• Complete traffic report (per AP, per SSID, per venue, per radio)</li> <li>• Session report</li> <li>• Unique client report (tracking 2.4 vs 5GHz clients over time)</li> <li>• Duration: up to 6 months (some reports may be restricted to shorter duration)</li> </ul>
<b>Troubleshooting</b>	<ul style="list-style-type: none"> <li>• Remotely reboot APs, pull diagnostics information</li> <li>• Event logs sorted by venue, SSID, AP, client</li> <li>• Alarms generated for AP status</li> </ul>
<b>Mobile App</b>	<ul style="list-style-type: none"> <li>• iOS and Android native applications</li> <li>• Push notifications for alarms (e.g. AP up/down events)</li> <li>• Add new APs and new SSIDs (enterprise or guest)</li> <li>• Monitor status of WLAN and clients</li> <li>• Customize captive portal content</li> </ul>

<b>Partner Delegation</b>	<ul style="list-style-type: none"> <li>• Organizations have the ability to extend their access credentials to enable Ruckus authorized VAR to manage network</li> <li>• Ruckus VAR single sign-on to manage multiple customer networks</li> </ul>
<b>Other Management Highlights</b>	<ul style="list-style-type: none"> <li>• SMS, email and mobile push notifications                             <ul style="list-style-type: none"> <li>– Network alerts</li> <li>– Customer notifications</li> </ul> </li> <li>• Multi-tenant migration capabilities</li> <li>• Google Maps integration</li> <li>• Import floor plan to venue to visualize physical location of APs</li> </ul>
<b>Cloud Infrastructure</b>	<ul style="list-style-type: none"> <li>• Hosted in USA on world-class IAAS provider with:                             <ul style="list-style-type: none"> <li>– ISO 27001 information security certification</li> <li>– SSAE-16, SOC 1, SOC 2, and SOC 3 certifications</li> <li>– Stringent physical, data access, data disposal security measures</li> <li>– Per tenant migration capabilities</li> <li>– Green carbon-neutral facilities</li> <li>– Dedicated inter-DC fiber connectivity</li> </ul> </li> </ul>
<b>SLA</b>	<ul style="list-style-type: none"> <li>• 99.9% network availability (does not include planned maintenance including periodic software upgrades and other pre-announced activities)</li> <li>• Ruckus NOC (U.S.-based)</li> </ul>
<b>Support</b>	<ul style="list-style-type: none"> <li>• 24x7 chat/online ticketing system/phone support options</li> <li>• Support for the Wi-Fi service is included for the term of the subscription</li> <li>• AP hardware warranty is covered separately with the AP purchase                             <ul style="list-style-type: none"> <li>– Warranty information is found on the AP data sheet</li> <li>– Warranty replacement process is return to factory. Ruckus will ship replacement AP after receiving customer's AP.</li> <li>– Advanced hardware replacement for each AP is sold separately (SKUs starting with 803-).</li> </ul> </li> </ul>
<b>AP Models Supported</b>	<ul style="list-style-type: none"> <li>– See <a href="http://www.ruckuswireless.com/cloud-devices">http://www.ruckuswireless.com/cloud-devices</a> for list of supported AP models</li> </ul>
<b>Cloud SKUs</b>	<ul style="list-style-type: none"> <li>• 1-year Cloud Wi-Fi license for one AP                             <ul style="list-style-type: none"> <li>– CLD-RKWF-1001</li> </ul> </li> <li>• 3-year Cloud Wi-Fi license for one AP                             <ul style="list-style-type: none"> <li>– CLD-RKWF-3001</li> </ul> </li> <li>• 5-year Cloud Wi-Fi license for one AP                             <ul style="list-style-type: none"> <li>– CLD-RKWF-5001</li> </ul> </li> <li>• 5-year State, Local, EDU license for one AP                             <ul style="list-style-type: none"> <li>– CLD-RWED-5001</li> </ul> </li> </ul> <p>Note: Subscription starts when the activation email is sent to customer. The start time is the same for all the licenses in the order, e.g., if customer orders 50 x 5-yr subscription, subscription start time is the same for all 50 APs, even if some are installed at a later date.</p>